

Modtec Engineering Corporation

(COMPANY PROFILE)



Office: 14 – Block A / 1, Eden Residencia, College Road, Lahore, Pakistan.

Ph: +92 42 35480581. Cell: 0300 - 949 2090.

syedimransabir@yahoo.com

CONTENTS

<u>Description</u>	<u>Page</u>
1. INTRODUCTION	3
2. VISION	4
3. MISSION	4
4. KEY PERSONS	5
5. ORGANIZATIONAL CHART	6
6. CONSULTANTS	7
7. FOREIGN PRINCIPLE	8
8. TOOL & PLANT LIST	14
9. PROJECT EXECUTED	15
10. SERVICES	16
11. QUALITY CONTROL	18
12. HSE POLICY	19
13. SAFETY	20
14. CONTACT US	21

MEC

INTRODUCTION

“MODTEC ENGINEERING CORPORATION” started business in 2009, since its establishment firm is providing wide range services in **“Mechanical Engineering Field”** according to international codes and standards i.e. American standards / British standards. MEC engages in the design, engineering, manufacturing, modernization, installation and servicing of material handling solutions, systems and products. The company focuses on developing projects for overhead, monorail, jib, gantry and workshop cranes; electric hoists, winches and trolleys. It offers consulting, engineering and designing, fabrication, installation, services and repairing, safety inspections / load testing. The company is also engaging in the distribution of complete imported cranes, hoists & winches. We focus on quality and safety.

- Annual Maintenance Contracts
- Erection & Commissioning
- Crane Health Assessment
- Modifications & Retrofitting
- Repairs, Services and Overhauling
- Relocation of cranes
- Crane Safety Certification
- Spares Sales
- Remote Conditioning Monitoring
- Other Products

MEC

VISION

We strive to be among the leading companies in Mechanical field by following the International Standards & Codes like **ASTM, ASME, API, BSI** and **DIN** Standards in order to achieve customer satisfaction.

We offer organizational environment that encourage professionalism, motivation and quality of workmanship.

MISSION

Our mission is multi-pronged and encompasses;

- Sustained growth in the earning and profitability by keeping in view out customer's satisfaction.
- Services, which based on the most optimum technology, are the core competency of our organization.
- An environment, which is cost effective and quality conscious.

MEC

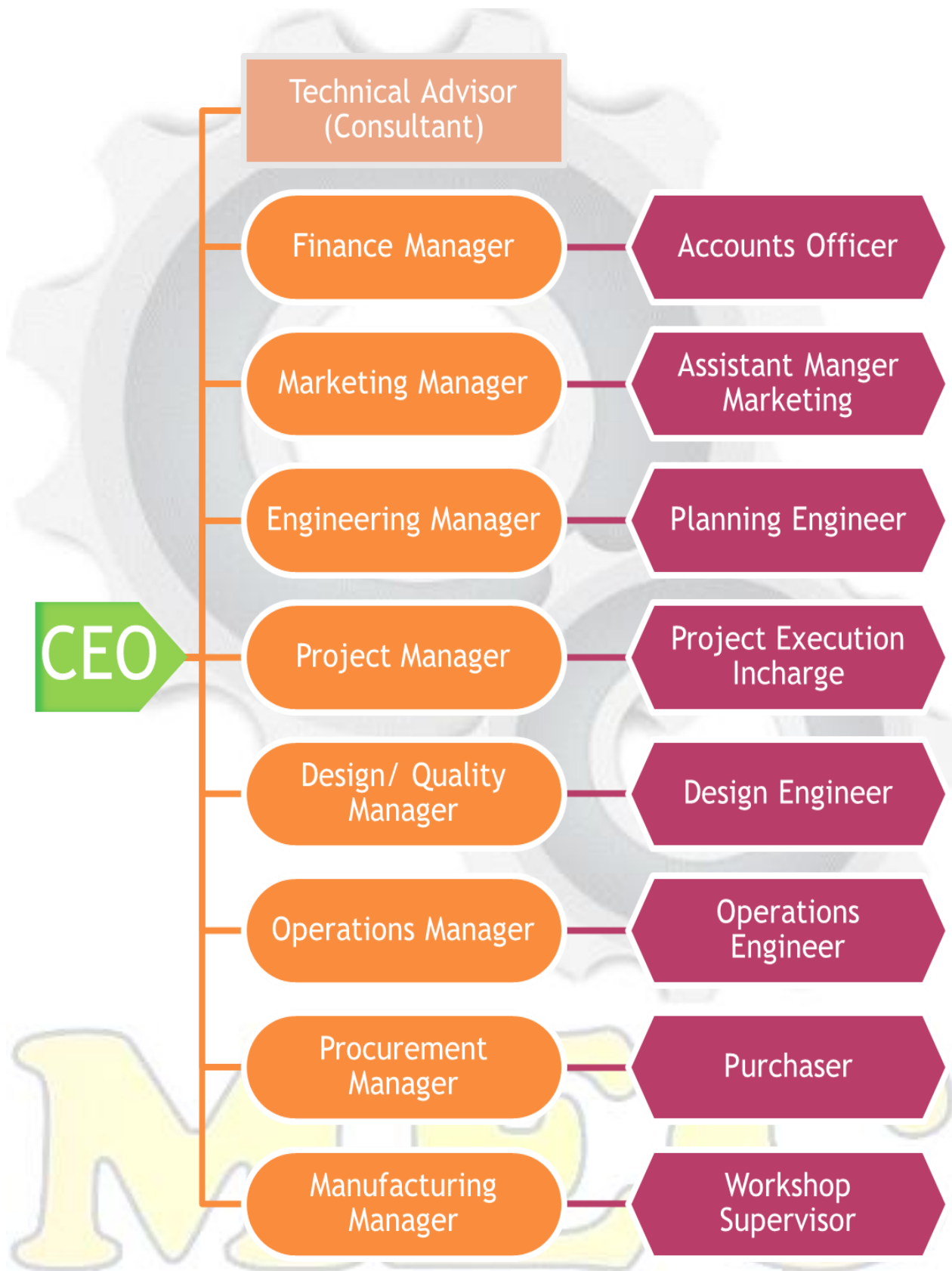
KEY PERSONS

1	Syed Imran Sabir	Chief Executive Officer
2	Syed Abid Gillani	Project Co-Ordination
3	Karamat Hussain	Manager Design & Q.C
4	Muhammad Sultan	Design Engineer
5	Syed Adnan Ahmad	Manager Operations
6	Syed Fawad Haider Bokhari	Manager Marketing & Sales
7	Nadeem Ahmad	Manager Finance
8	Abdul Rehman	Manager Procurement

MANUFACTURING DEPARTMENT

1	Muhammad Yaqoob	Manager
2	Karamat Hussain	Manager Mechanical
3	Tanveer Ahmad	Workshop Supervisor
4	Munawar Hussain.	In-Charge Project Execution
5	Sajid Ali	Site Supervisor
6	Tanveer Hussain	Mechanical Supervisor
7	Imran Hussain	Electrical Supervisor

ORGANIZATIONAL CHART



CONSULTANTS

1. **AL REHMAN ENGINEERING CORPORATION**

(MECH ENGINEERING)

2. **GILANI INTERIOR**

(CIVIL ENGINEERING)

3. **SANAWAR & COMPANY**

(LEGAL & TAX CONSULTANTS)

NTN & PRA # 3705356-6.

STN # 3277876153839.

MEC

FOREIGN PRINCIPLES

Ser	NAME	ORIGIN	TYPE	
1	KULI HOIST	GERMANY	HOIST	
2	BALKANCARPODEM	BULGARIA	HOIST	
3	THAC	TAIWAN	HOIST	
4	GH CRANES	EUROPEAN	HOIST + CRANE	
5	Henan Yuntian Crane Co., Ltd.	China	HOIST + CRANE	




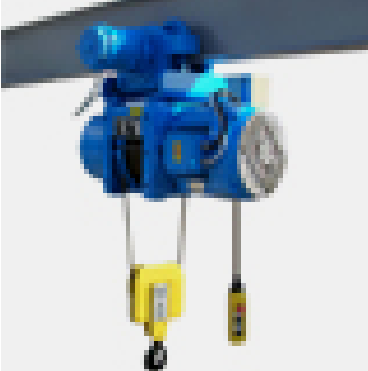




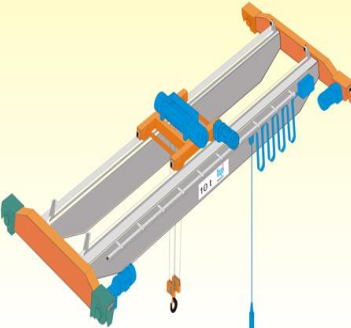


KULI

		
Electric Wire Rope Std Headroom Monorail Trolley EE	Electric Wire Rope Low Headroom Monorail Trolley KE	Electric Wire Rope Cantilevered Carriages WE
		
Electric Wire Rope (Foot Mounted F)	Electric Chain Hoist	Electric Wire Rope Double Girder Crabs ZE
		
Electric Chain Hoist	Low Space Cranes	Single Girder Cranes

THAC

A yellow THAC double rail type electric wire rope hoist with two pulleys and a hook.	A yellow THAC low headroom type electric wire rope hoist with a single pulley and a hook.	A blue THAC standard/advanced single phase electric chain hoist with a hook.
Double Rail Type (Elec. Wire Rope Hoist)	Low Headroom Type (Elec. Wire Rope Hoist)	Std/ Adv/ Single Phase Type (Elec Chain Hoist, US)
A purple THAC double girder running motorized trolley with a green motor and wheels.	A yellow THAC mini chain hoist with a hook.	A red THAC table winch with a yellow handle and a hook.
Double Girder Running, Motorized Trolley	Mini Chain Hoist (Single Phase) (LH Series)	Table Winch (AC Winch)
A yellow THAC open winch with a motor and a hook.	A blue THAC hollow shaft helical geared motor.	A black THAC parallel shaft gear motor.
Open Winch	Hollow Shaft Helical Geared Motor	Parallel Shaft Gear Motor

BALKANCARPODEM

		
<p style="text-align: center;">Stationary Elec. Wire Rope Hoist</p>	<p style="text-align: center;">Monorail Trolley, Std. Headroom</p>	<p style="text-align: center;">Double Rail Trolley</p>
		
<p style="text-align: center;">Single Girder Overhead Travelling Crane</p>	<p style="text-align: center;">Double Girder Standing Overhead Travelling Crane</p>	<p style="text-align: center;">Overhead Crane</p>
		
<p style="text-align: center;">Crane Components</p>	<p style="text-align: center;">Pendent</p>	<p style="text-align: center;">Gear Motor</p>

HUNAN YUNTIAN CRANE AND OTHERS

		
Elec. Hoist Series	Suspension Crane	Single Girder Cranes.
		
DEMAG	DEMAG	DEMAG
		
Heavy Double Hook Hoist	Double Hook Hoist	MISC

PROJECTS EXECUTED
(OVER-HEAD TRAVELLING CRANE)

Ser	DESCRIPTION	TONS	JOB	UNITS	YEAR
1	Dadex	5	Overhead Crane	1	2007
2	Orient Group of Industries	5	Installation	1	2007
3	Suparco	5 & 10	Overhead Cranes.	1	2007
4	Allied Engineering and Services	15/3	KG (Korea)	1	2008
5	Mangla Dam Joint Venture	3	KG (Korea)	2	2008
6	Sitara Chemical Industries	3	THAC (Taiwan)	1	2008
7	Faruki Pulp Mills	10	Installation	2	2008
8	Descon Engineering Limited	1 & 2	Gen Hoist (Korea)	5	2009
9	Best Way Cement Limited	30/10	DEMAG Parts	1	2009
10	Rupali Polyester Limited	1	THAC (Taiwan)	1	2009
11	Masco Energy Services	10 & 5	KG (Korea)	2	2009
12	Pakarab Fertilizer	10 & 15	Rehabilitation	5	2009
13	Suparco	3	Refurbishment	1	2009
14	The Erector	5	THAC (Taiwan)	1	2010
15	Descon Engineering Limited	10	PODEM (Bulgaria)	4	2010
16	Descon Engineering Limited	5	KG Cranes	2	2010
17	Allied Engineering & Services	10/2	PODEM (Bulgaria)	1	2010
18	Al-Hafiz Crystoplast	10	PODEM (Bulgaria)	1	2011
19	Pakarab Fertilizer	15, 16, 30	Rehabilitation	3	2011
20	PEL	10	(China)	2	2011
21	Pakarab Fertilizer	5	KULI (Germany)	1	2011

22	Fatima Fertilizer Co., Ltd.	5	PODEM (Bulgaria)	2	2012
23	Neelam Jehlum Hydal Project	2	(China)	3	2012
24	Hira Terry Mills Limited	1	Electric Chain Hoist	1	2012
25	KSB Pumps Company Ltd.	0.5 & 1	Spare Parts	4	2012
26	Pakarab Fertilizer	5	Mechanical Works	1	2012
27	Pakarab Fertilizer	5	Electrical Works	1	2012
28	MES Engineering Pvt Ltd.	2	PODEM (Bulgaria)	1	2012
29	Bestway Cement Limited	30 / 10	Steel Wire Rope	1	2012
30	Maple Leaf Cement Factory Ltd.	10	GRAB BUCKET	1	2012
31	Punjab Irrigation Department	25	Hoist & E/C	1	2013
32	Omega Industries	2	Electric wire Rope	1	2013
33	Atlas Power Limited (225 MW)	5 & 10	Pendent Cables	2	2013
34	Al-Hafiz Crystoplast	10	Extension of runway	1	2013
35	Herbion Pakistan	1 & 3	KULI & PODEM	2	2014
36	Fatima Fertilizer Co., Ltd	5	BalkancarPodem	1	2014
37	Descon Engineering Limited	10	China	1	2014
38	Maple Leaf Cement Factory Ltd.	10	GRAB BUCKET	1	2015
39	Family Departmental Store	01	Cargo Lift	1	2015
40	Herbion Pakistan	01	Passenger/Cargo Lift	1	2015
41	Chemi Zone (Pvt) Ltd.	03	Cargo Lift	1	2015
42	Rhino Pre Engg Building	5 & 10	GH Cranes	2	2015
43	Rehman Medical Institute (Pvt)		Stairs Fabrication	1	2015
44	Fatima Fertilizer Co., Ltd.	2	BalkancarPodem	1	2015
45	Nishat Chunian Power Ltd.	6.3	Supply of Steel Wire	1	2015
46	BOSCH	5	Cargo Lift	1	2015

47	ICI PAKISTAN.	32/5	Crane Electrification	1	2016
48	Bestway Cement Limited	01	Rope supply for Lift	1800 M	2016
49	Fatima Fertilizer Co., Ltd.	01	Hoist electrification	1	2016
50	Herbion Pakistan		HEPA & HVAC Filters		2016
51	Nishat Chunian Power Ltd.	05	Supply of accessories	4	2016
52	Bestway Cement Limited.	01	Rope supply for Lift	1000 M	2016
53	Bestway Cement Limited	05	Supply & Inst. Crane.	1	2017
54	Cheema Hospital (Gojjara).	01	Cargo lift	1	2017
55	Fatima Fertilizer Co., Ltd.	05	Supply Hoist Trolleys	02	2017
56	Bestway Cement Limited	02	Supply of Hoist	1	2017
57	Chips Factory	01	Cargo Lift	01	2017
58	ICI Khewara	10	Supply & installation of wire rope.	01	2017
59	Bestway Cement Limited	10	Repairing EOT Crane	01	2017
60	Bestway Cement Limited	08	Supply & Inst. Crane	01	2018
61	NISHAT- POWER PLANT.	6.5	Service & maintenance of EOT Cranes.	02	2018
62	ICI – SODA ASH (KHAWARA)	05	Supply and installation of crane.	01	2018
63	Fatima Fertilizer Co., Ltd.	03	Supply, installation of crane	01	2018
64	ICI – SODA ASH (KHAWARA)	05 & 10	Supply of electric system.	01	2018
65	Bestway Cement Limited	02	Supply of electric chain hosts	02	2018
66	Bestway Cement Limited	10, 20, 25	Supply and installation of EOT Cranes	03	2018
67	Bestway Cement Limited	03	Supply and installation of EOT Crane.	01	2019
68	Bestway Cement Limited	02	Supply of steel wire rope	1182 M	2019
69	Sigma Allied Engineering	10	Hoist repairing	01	2019

70	S.Fazalilai & Sons (Pvt) Ltd.	5, 8, 10	Hoist & Crane Repairing	03	2019
71	Herbion Pakistan	2	Maintenance of lift	01	2019
72	Government Organization	10	Festoon system supply	01	2019
73	Ravi Autos Sundar.	05	Supply & Installation of Overhead Crane	01	2019
74	Pakarab Fertilizer	15	Overhauling of Crane	01	2020
75	PABC Limited	7.5	Supply & Installation of overhead crane	01	2020
76	S.Fazalilai & Sons (Pvt) Ltd.	10	Supply & Installation of Overhead Crane	01	2020
77	Venturetronics Lahore.	5 + 5	Manufacturing of Grid Transformer Frames	02	2020
78	Vantage Printers.	01	Supply & Installation of Overhead Crane.	01	2021
79	Plum Qingqi Motors.	06	Overhauling of Crane.	01	2021
80	Byonyks (Pvt) Ltd.	01	Supply & Installation of JIB Crane.	01	2021
81	Sigma Shoes (Pvt) Ltd.	01	Supply & Installation of Overhead Crane.	01	2021
82	Albario Engineering Pvt Ltd.	10	Installation of Overhead Crane	01	2021
83	Bestway Cement Limited.	16	Services of Tower Crane	01	2021
84	Pakarab Fertilizer	10	Overhauling of Overhead Crane	01	2021

SERVICES

We provide after sales services to our customers which include various levels of maintenance programs from preventive maintenance services to full maintenance agreements. The main principle behind preventive maintenance programs is to shift your machine maintenance from reactive repairs towards better maintenance control by carrying out the maintenance proactively in a regular and systematic way to avoid breakdowns. This is done according to a machine specific maintenance program that is based on the usage and criticality of your machine.



Preventative Maintenance Program

Our customized preventative maintenance program monitors and prevents equipment failure. By scheduling routine repairs, maintenance work and inspections, we will help to not only prevent equipment safety issues, breakdowns and compliance violations but prevent component failure. This can prevent unnecessary production downtime - saving you time and money!

Reactive Maintenance Program

Our customized Reactive maintenance program quickly takes action on any emergency that took place regarding failure, damage and breakdown of any crane parts and equipment. This maintenance program will help to save production stoppage and work.



Predictive Maintenance Program

Our customized predictive maintenance program not only maintains your equipment, but also predicts failures. After scheduling routine repairs and inspections to ensure compliance and preventively maintain your equipment, we analyze and prioritize your current and future repair requirements. By predicting these needs, you can reduce unexpected repairs and unbudgeted equipment purchases. This predictive maintenance program will help you to reduce emergency repair costs (and downtime) and allows you to budget repairs and upgrades.

Full Maintenance Agreements

Whether you have a ¼ Ton hoist or hundreds of cranes, **“MODTEC ENGINEERING CORPORATION”** offers full-maintenance agreements that allow you to have a fully managed staff ready to take care of your complete crane equipment and maintenance needs. Many Modern Engineering Corporation customers enjoy the flexibility of

controlling manpower levels and reducing technical and managerial costs - all the while dramatically increasing productivity! Our highly trained technicians and inspectors have the knowledge and tools available to take care of all your crane needs, allowing you to concentrate your time and manpower on your production.



QUALITY CONTROL

“MODTEC ENGINEERING CORPORATION” is committed to providing quality products and services according to customer requirement by following the International Engineering standards. Our goal is to ensure that through established standards & measurements, the level of quality at MEC matches or even exceeds our customer’s expectations.

This commitment to quality extends from the highest level to all members of staff and shall be reviewed on regular basis. We develop quality awareness through process improvement, measurements, development and by training our employees.

Our Quality Control Process Includes;

- Verifying and validating both existing and new program functions
- Researching improvements that added to the quality of our products
- Helping to improve our products through involvements with our employees and our customers
- Conducting internal quality audits and management review for an ongoing evaluation and improvement of our quality system

We assure our Quality Control to our customers, vendors and partners. We solicit their inputs to enable us to meet their expectations. Customers are a key source of feedback related to product design, quality issues and after sales service. This feedback is openly welcome as it forms an important basis for improvements. The product is manufactured for the customer and therefore we must endeavor, to the best of our ability to meet there requirement.

HSE POLICY

“MODTEC ENGINEERING CORPORATION” is committed to continual improvement in the field of HSE to ensure a high level of health, safety and the protection of environment. This objective is achieved by us by following the International & Local standards of HSE like OHSAS and Pakistan regulatory authority’s standards.

It is the policy of the company to provide healthy and safe working conditions and give due consideration to preservation of the environment not only in their workshop but also at working site in accordance with relevant standards and guidelines comply with national and international regulations.

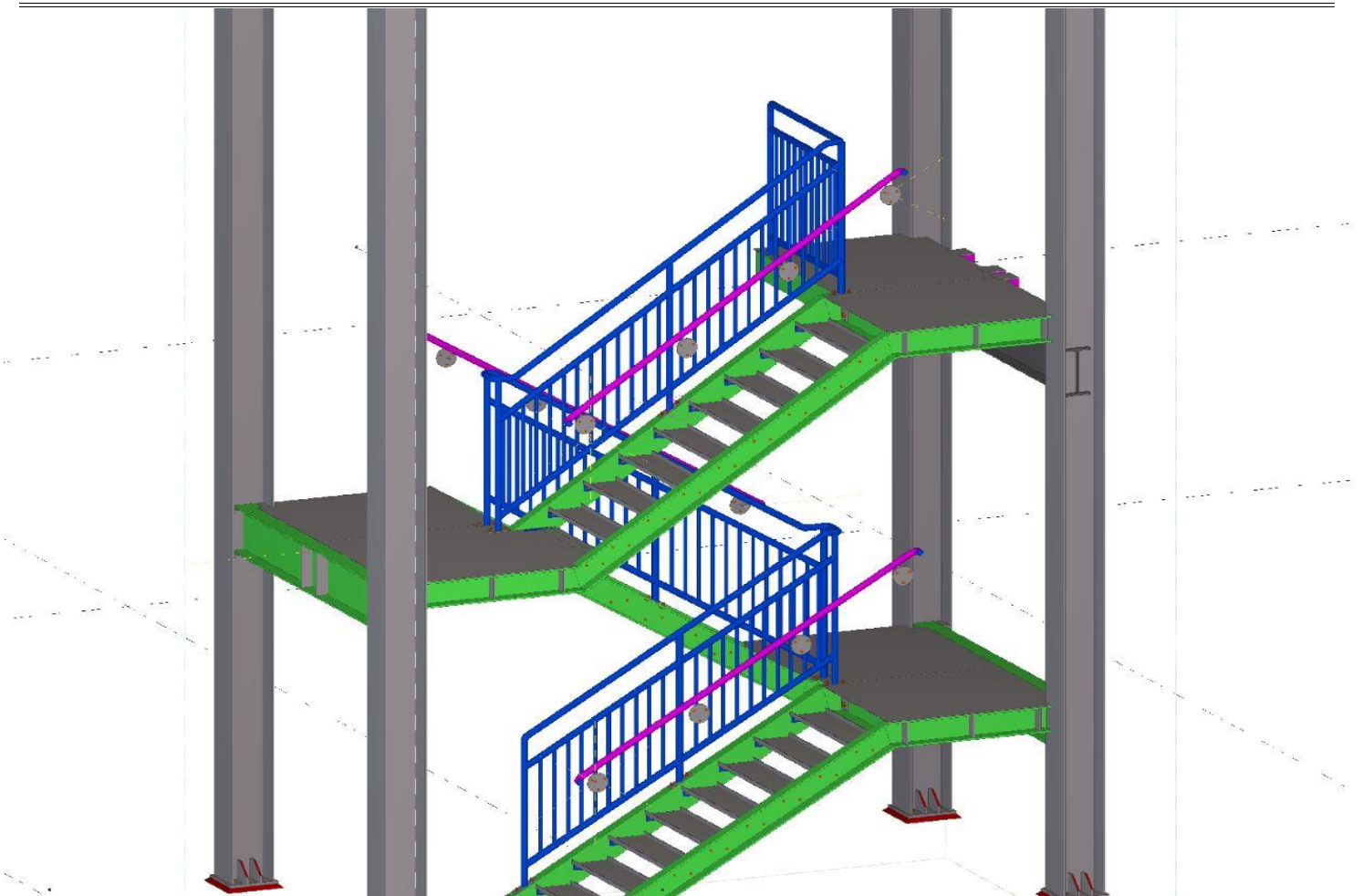
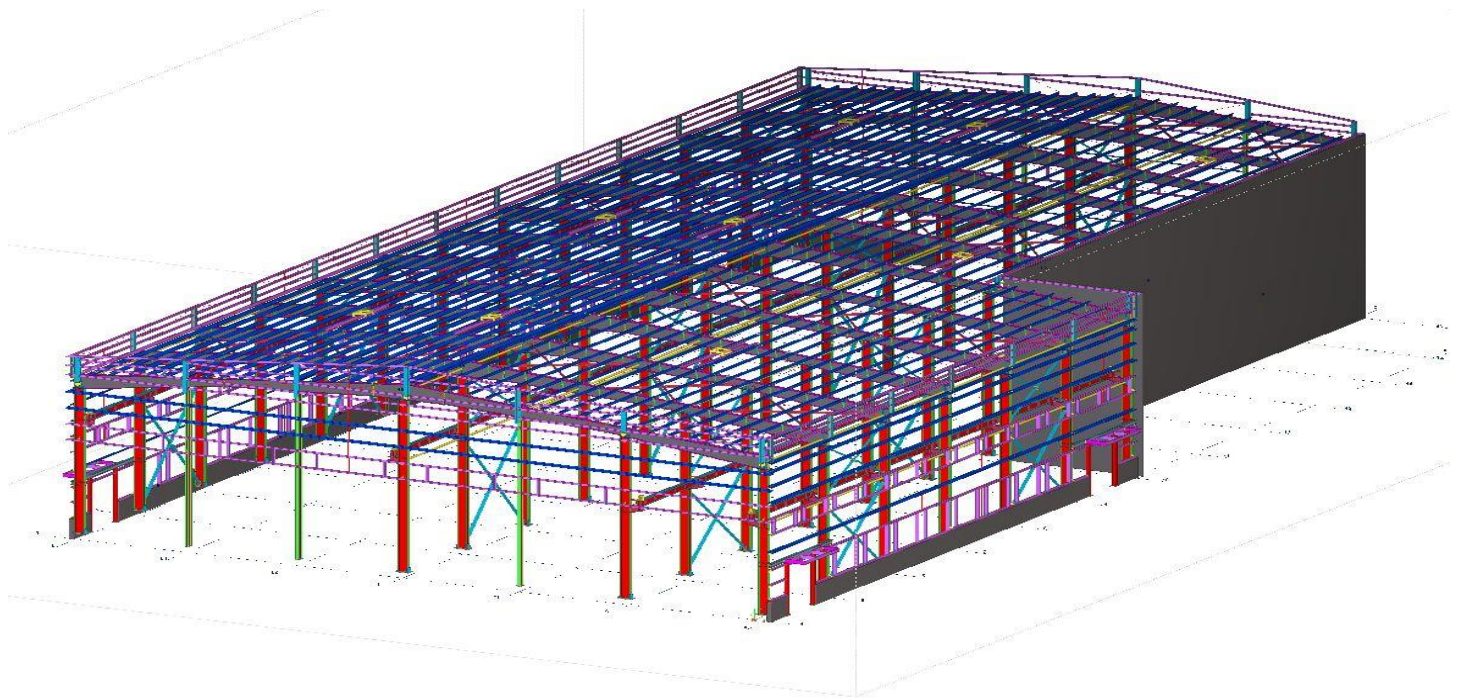
Our key beliefs are;

- Every worker is responsible for the health safety of themselves and those around them.
- Managers and supervisors are responsible for the health and safety of all persons on our workshop and site
- Safe behavior is an integral part of every task we perform
- Every job can be done safely and we will take the time to do it right
- HSE rule will never be compromised for any reason.

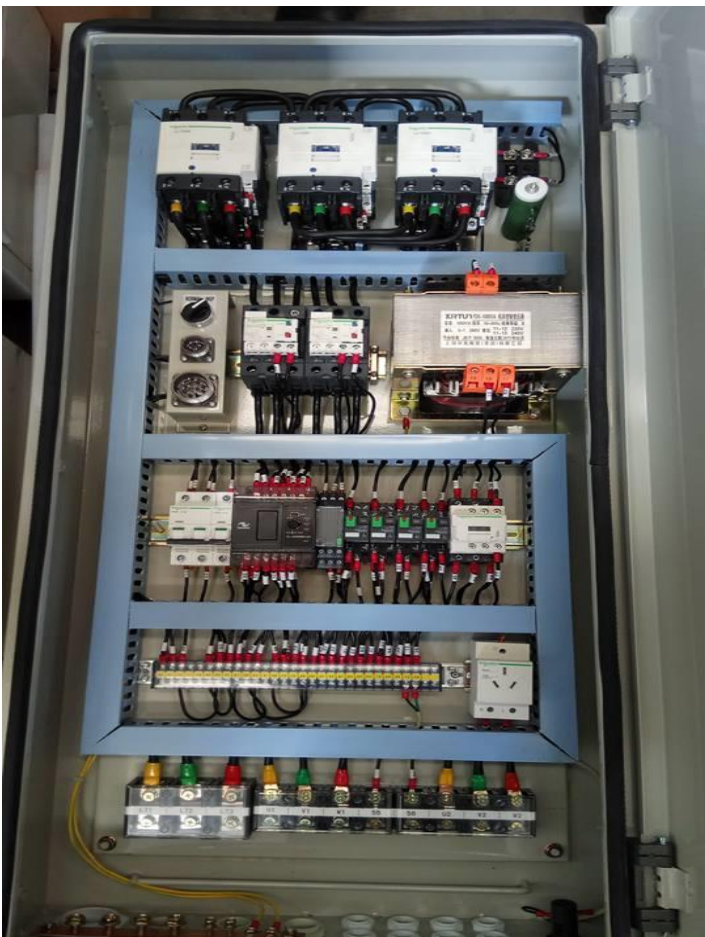
We confirm that we periodically review and improve our HSE objectives and programs and communicate them to all our employees and to the other companies working at site. Meeting our commitment to an effective way, HSE policy is our primary management objective and the individual and collective responsibility of all employees.

SAFETY EQUIPMENT













CONTACT US



Office:

**14 – Block A / 1.
Eden Residencia, College Road,
Lahore, Pakistan.**

Ph: +92- 42- 35480581.

Cell: 0300 - 949 2090.

syedimransabir@yahoo.com